



## **M.A. in Applied Theology**

Christian Leadership

Family, Youth and Community Work

## **M.A. in Applied Theology**

Christian Leadership

Family, Youth and  
Community Work

### **Welcome!**

This Information Pack will help you as you think about postgraduate study with Moorlands. We hope it encourages you to apply!

The Moorlands postgraduate programme is designed to help you fulfil your own personal goals. Our aim is for you to be able to use what you are learning in your own situation as soon as you start – it's practical theology in action.

The programme is part-time, relevant and flexible.

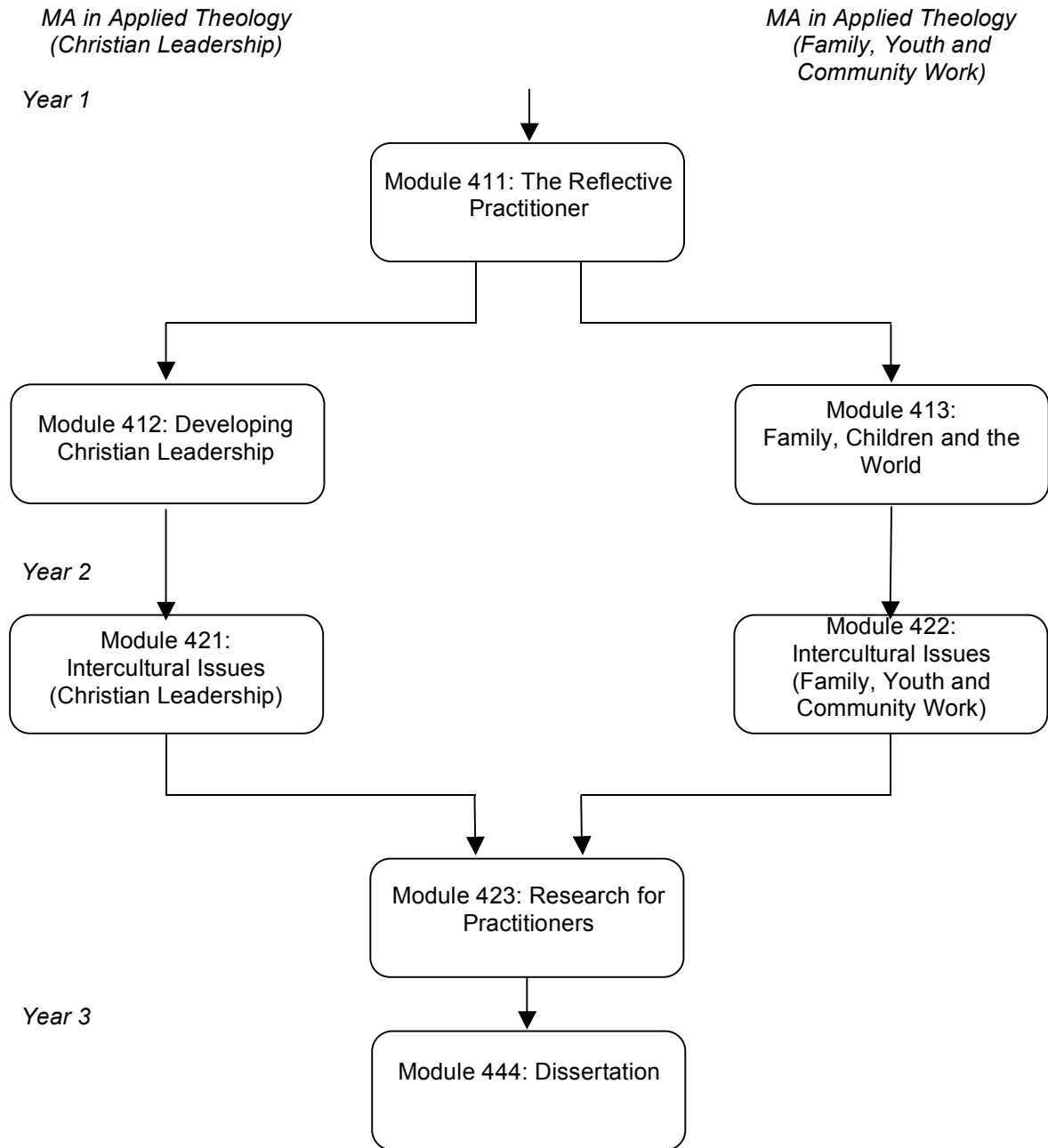
- As a **part-time** programme it brings you to Moorlands for four two-day blocks a year (beginning in September and then December, February and April) with supported individual study in between while you continue in your job. The very first study block is preceded by a day for orientation to the programme.
- As a **relevant** programme it asks you to choose one of two key areas as your focus of study: **Christian Leadership** or **Family, Youth and Community Work**. Two of the four taught modules look specifically at your chosen area, the other two cover more general topics in Applied Theology.
- The **flexible** programme means you can start off by doing the Postgraduate Certificate or Postgraduate Diploma if you are not sure about committing yourself to the full MA course. It allows you to take two modules (studying for just one year) to complete a Postgraduate Certificate, or to take four modules (studying for two years) to achieve a Postgraduate Diploma. If after the two years, you go on to write a dissertation, then you obtain the complete Masters Degree.

We've tried to put all the information that you need into this pack. Please get in touch with us if there is anything that you would like to talk through.

We look forward to hearing from you.

*Ian Kirby*  
for the MA Team, January 2010

# Programme Map



Students taking the Christian Leadership programme follow the route on the left-hand side of the map. Those taking the Family, Youth and Community options go down the right-hand route.

Students study one module at a time. Modules 411, 421 and 422 run in the first semester. Modules 412, 413 and 423 run in second semester. Students studying for the Masters Degree have up to five years to complete all the necessary modules.

# Module Contents

## **Module 411: The Reflective Practitioner**

*Taken by all students*

- The Christian practitioner as learner
- Methods of reflection on practice.
- Personal Issues in Practice: e.g.. teams and groups, motivation, roles and expectations, anger and anger management, organisational culture, the skilled helper.
- Theology and practice, and models for practical theology.
- The nature and demands of postgraduate study.

## **Module 412: Developing Christian Leadership**

*Taken only by students focussing on Christian Leadership*

- Biblical leadership, examples and principles.
- Understanding contemporary secular leadership.
- Theological reflection on biblical and secular leadership theory.
- Servant leadership.
- Developing new leaders through mentoring, delegation, supervision and appraisal.
- Team-building.
- Understanding organisations.
- Strategic planning and creative thinking.
- Transitioning and the management of change.

## **Module 413: Family, Children and the World**

*Taken only by students focussing on Family, Youth and Community Work*

- Holistic child development, exploring a variety of theoretical and practice frameworks.
- The biblical perspective of the child in the context of their family, community, church and God's kingdom.
- Principles of social transformation.
- The history of Christian work with children.
- Methods of assessment and models of prevention and intervention drawn from local, national and international contexts.

## **Module 421: Inter-cultural Issues (Christian Leadership)**

*Taken only by students focussing on Christian Leadership*

- A theology and sociology of the world and culture.
- A theology of the kingdom of God and the mission of the church.
- Understanding culture, its importance and complexity.
- The impact of changes, such as globalisation, on contemporary culture.
- Key issues for leadership in cross-cultural Christian communication and mission.
- Contextualisation of the gospel to be relevant to culture and faithful to scripture.

## **Module 422: Inter-cultural Issues (Family, Youth and Community Work)**

*Taken only by students focussing on Family, Youth and Community Work*

- A theology and sociology of the world and culture.
- A theology of the kingdom of God and the mission of the church.
- The "globalised youth culture debate" and how this impacts inter-generational approaches within different cultures in today's multicultural societies.
- Key issues for professional family, youth and community workers; globalisation versus local culture; intergenerational church versus youth church; syncretism versus contextualisation; professionalism versus faith-based practice.

**Module 423: Research for Practitioners**

*Taken by all students*

- Theological approaches and contexts.
- Research families (qualitative versus quantitative) and approaches (case study, survey, experiment, action research, participant observation, etc.).
- The politics and ethics of research.
- The research process.
- Sources of information (including research techniques: study of documents, interviews, observations, questionnaires etc.).
- Personal research management.

**Module 444: Dissertation**

*Taken by all students*

The dissertation (18,000 words) is the culmination of the MA student's learning experience. It is an excellent opportunity for you to choose something that is important to you, and to study it in a rigorous way.

# Moorlands College and the Church

Moorlands exists to train Christian men and women for service and leadership in the church of Jesus Christ. This means that for initial training, at undergraduate level, we ask specifically for a recommendation from an applicants' home church. While this does not apply in the same way for continuing professional development on our postgraduate courses, we still expect that, normally, applicants will be in good standing with their church. This is why we ask for a reference from a church leader. We also encourage applicants to look to the church for prayer support during their studies.

## MA Study Block Dates

Study Blocks are two-day, intensive learning experiences, containing a blend of lectures, discussion and structured group tasks. The dates of next year's Study Blocks are given below.

Study block	2010/2011
Orientation day <sup>1</sup>	20 September 2010
1.	21-22 September 2010
2.	14-15 December 2010
3.	23-24 February 2011 <sup>2</sup>
4.	5-6 April 2011

Costs of lunch, tea and the use of college amenities during study blocks are included in the course fees. Bed and breakfast overnight accommodation will be available for a small additional charge.

You can expect the dates of Study Blocks in following years to follow a similar pattern. The study block in April tends to move the most though, as we avoid Easter.

---

<sup>1</sup> The orientation day is for new students only.

<sup>2</sup> This is a Wednesday and Thursday, not the normal Tuesday and Wednesday.

## Example Semester Outline: Module 411: The Reflective Practitioner

This example outline indicates the structure of a typical module (it is not a firm timetable!).

Key texts:

Ballard, Paul, and John Pritchard, *Practical Theology in Action: Christian Thinking in the Service of Church and Society*. London: SPCK, 1996.

Cartledge, Mark, *Practical Theology: Charismatic and Empirical Perspectives*, Carlisle: Paternoster, 2003.

### a) Pre-semester exercise

Students will complete a short written exercise, interacting with some supplied reading and linking this to their own practice, and come prepared to discuss this at the first study block.

### b) Study Block 1 (September)

Students from a distance arrive the previous evening.

DAY 1:

*Morning (3 hrs; two sessions)*

1. Introduction: what do we want and what do we bring? What is continuing professional development?
2. Types of theology. Introduction to Practical Theology.

*Afternoon (3 hrs; two sessions)*

1. Induction to Learning Resources: library tour, database searches, use of internet.
2. Personal Issues in Practice I: Groups and teams.

*Evening (2 hrs)*

Personal Issues in Practice 2: roles and expectations.

DAY 2:

*Morning (3 hrs)*

Action learning: introductory workshop.

*Afternoon (3 hrs; two sessions)*

1. Theory and Practice I: tools for practical theology: the Reflection Process; the Pastoral Cycle.
2. Personal Issues in Practice 3: motivation

At the first Study Block the three assessment tasks for this module will be issued and explained.

### c) Individual study time (usually 10 weeks)

Students work on assessment tasks. The first is a critical book review (up to 1,500 words), the second a reflection on practice (3,500 words).

Students keep in contact with the module tutor, especially by using Moodle (a Virtual Learning Environment) but also by e-mail telephone, and post where appropriate.

#### **d) Study Block 2 (December)**

Students from a distance arrive the previous evening.

##### *DAY 1:*

###### *Morning (3 hrs; two sessions)*

1. Learning from experience: levels of reflection, critical reflection, feelings and learning.
2. Theory and Practice 2: Models for Practical Theology and theological reflection.

###### *Afternoon (3 hrs; one session)*

Action learning sets.

###### *Evening (2 hrs)*

Personal Issues in Practice 4: anger and anger management.

##### *DAY 2:*

###### *Morning (3 hrs; two sessions)*

1. Theory and Practice 3: The Christopraxis model revisited.
2. Personal Issues in Practice 5: Organisational Culture.

###### *Afternoon (3 hrs; two sessions)*

1. Personal Issues in Practice 6: the Skilled Helper.
2. Flexible / Review

The third assessment task for this module (Reflection on practice, 4,500 words) will be further explained at the second study block.

#### **e) Individual study time** (Christmas vacation plus usually 5 weeks)

Students are working towards the third assessment task (4,500 words), the deadline for which is near the end of the semester. They will continue to be supported by the module team.

## Entrance Requirements for Postgraduate Studies

Our admissions policy at postgraduate level will encourage a variety of appropriate entry routes to students with sufficient academic ability, evidence of commitment to Christian life and service, and current engagement (full-time or part time, paid or voluntary) in an appropriate professional context. The college operates an equal opportunities policy in its admission of students to all its courses.

Students may be admitted as Postgraduate Certificate, Postgraduate Diploma or Master's Degree candidates or as Associate Students (see page 1 for the differences).

Applicants will be invited for interview after they have submitted an application and references have been taken up. Interviews will normally take place at the College.

Students will be expected to have access to a computer with e-mail and internet.

### Criteria for Admission as a Candidate for the Master's Degree

In order to register as a postgraduate student for a Master's Degree, applicants will need to provide satisfactory evidence of the following, through evidence of previous work and achievements, and through references:

- a) An intellectual ability to succeed at Master's level including a demonstration of such intellectual qualities as open-mindedness, imagination, intellectual curiosity, positive and collaborative attitudes to learning, an ability to generalise in a principled and systematic manner, an ability to handle ideas critically and analyse issues and approaches.
- b) A British honours degree or a postgraduate diploma or a professional qualification recognised as being equivalent to an honours degree in a theological field. This is the normal entry requirement for the Master's award. Other qualifications or experience which demonstrate that a candidate possesses appropriate knowledge and skills at honours degree standard may be acceptable (see "Important Note" below).
- c) A capacity to contribute to, and benefit from, the study of practice, as part of the applicant's continuing professional or vocational development.
- d) Normally, at least two years of experience relevant to their programme of study.

Some applicants who do not fulfil these criteria may be offered admission to the Postgraduate Certificate or Postgraduate Diploma stage. Satisfactory achievement in the programme will then enable admission to further stages, including the MA.

### Criteria for Admission as a Candidate for the Postgraduate Certificate and Postgraduate Diploma

Applicants for admission as a candidate for the Postgraduate Certificate or Postgraduate Diploma will need to give evidence of the following:

- a) A first degree of quality and discipline range appropriate to the award, or academic/professional qualifications or experience deemed to be equivalent.
- b) A capacity to contribute to, and benefit from, the study of practice, as part of the applicant's continuing professional/vocational development.
- c) Normally, at least two years of experience relevant to their programme of study.

### **Criteria for Admission as an Associate Student**

Associate Students are accepted to study on one or more modules, but not for a complete award. They are expected to undertake assessments for the modules where they are registered. Associate Students may apply to register for an award during or upon completion of their programme of study. Any relevant credit received as an Associate Student will normally be transferred to an award.

Applicants who wish to be admitted as Associate Students will be required to satisfy the course leader that they have the potential to effectively participate in and benefit from studying the module or modules for which they wish to register.

### **Criteria for Overseas Applicants**

Students for whom English is not their first language will be required to demonstrate competence in the English language prior to interview. The minimum level of competence normally required for postgraduate study is a British Council IELTS score of 7.0 (or recognised equivalent).

Please note that as the course is part-time, it is not normally possible for students to gain a study visa in order to participate in the course.

### **Important Note**

*We realise that some people who will be interested in these courses won't have a degree in theology, perhaps not a degree at all, but will have years of experience of Christian life and service. If that is your situation please contact us to talk further, or put in an application and we can discuss this at interview.*

*You will need a basic theological grounding to undertake the course successfully, but that can come from personal study and life experience as well as through formal qualifications. In addition, we run a "mini-module" in theological study skills to help students with the necessary theological grounding to understand how to apply that in an academic context. The best time to take this module is in the Spring-Summer, so students without a degree in theology are encouraged to apply in time for this.*

## **Postgraduate Fees**

Please see separate sheet about fees.

Moorlands College  
Sopley  
Christchurch  
Dorset BH23 7AT

Tel: 01425 674500  
E-mail: [enquiries@moorlands.ac.uk](mailto:enquiries@moorlands.ac.uk)